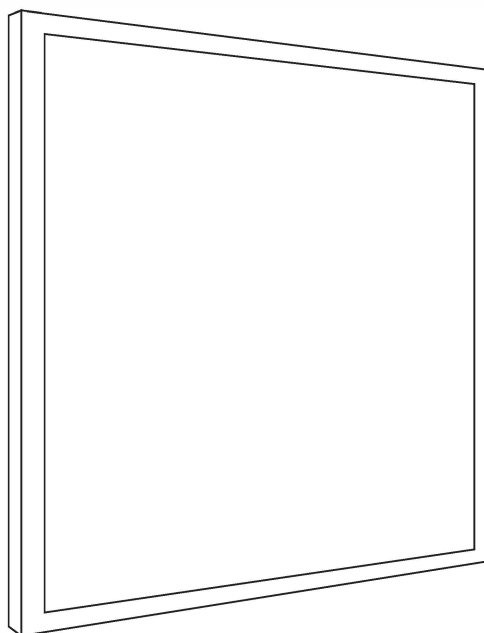
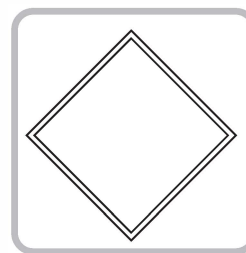


User Manual

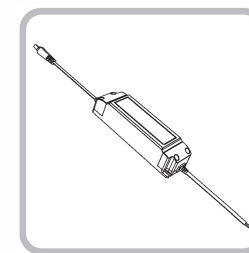


All the pictures are just for reference
and we have the final explanation rights

Item List

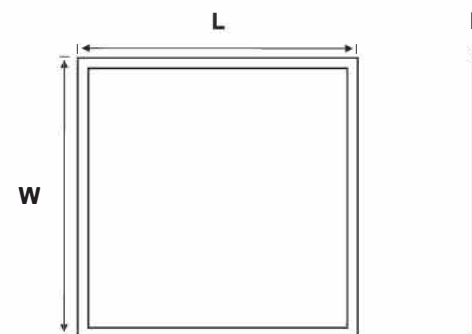


LED PANEL LIGHT



Driver

Size



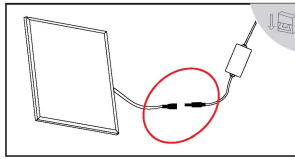
SIZE	L X W X H (mm)	L X W X H (Inch)
European Size		
300X300	295 X 295 X 10 mm	11.62 X 11.62 X 0.4"
300X600	295 X 595 X 10 mm	11.62 X 23.43 X 0.4"
600X600	595 X 595 X 10 mm	23.43 X 23.43 X 0.4"
300X1200	295 X 1195 X 10 mm	11.62 X 47.05 X 0.4"
600X1200	595 X 1195 X 10 mm	23.43 X 47.05 X 0.4"
American Size		
2FT X 2 FT	602 X 602 X 10 mm	23.7 X 23.7 X 0.4"
1FT X 4 FT	298 X 1209 X 10 mm	11.74 X 47.6 X 0.4"
2FT X 4 FT	602 X 1209 X 10 mm	23.7 X 47.6 X 0.4"
Germany Size		
622X622	622 X 622 X 10 mm	24.49 X 24.49 X 0.4"

Installation

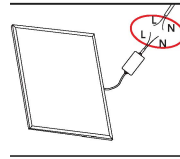
***Cut off power before installation.

European Size (Germany size) Panel connection diagram

Connection
Preventing connection may
cause lighting failure



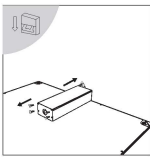
1. Connect driver to the panel



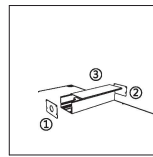
2. Then connect with city power (L-L ; N-N)

(American Size) Panel connection diagram

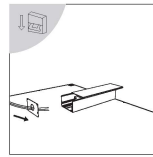
Connection



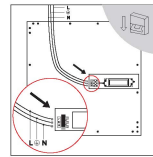
1. Remove the screws.



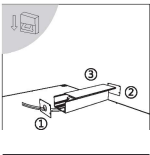
2. Remove driver box as above ①-②-③



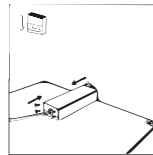
3. Pass through the driver box hole and Connect the AC wires with driver wires



4. Wire connection (L-L, N-N)



5. Cover the driver box lid as above ③-②-①



6. Fix the whole driver box with screws.

Installation

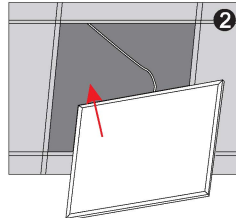
***Cut off power before installation.

Recession

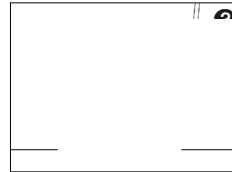
***Customers can choose safety rope to avoid lamp falling caused by uncertain factors (earthquake, etc).



1. Remove the plasterboard from the ceiling.

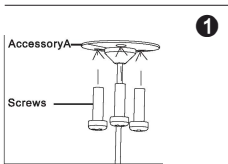
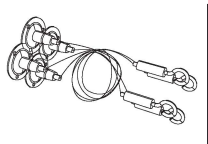


2. Fix the panel into ceiling.

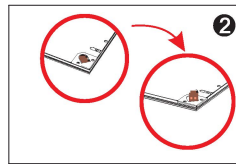


3. Installation finished.

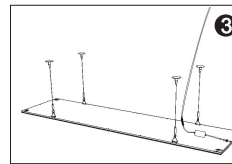
Suspension



1. Screwing accessory A into ceiling.

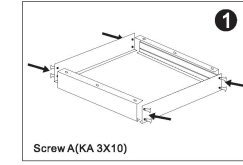
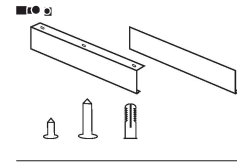


2. Prize up the hook as above.

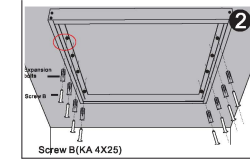


3. Hang up the suspension kit; installation finished.

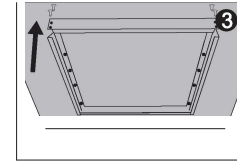
Surfaced mounted



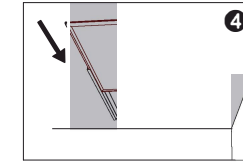
1. Assemble the four frames with Screw A to a whole square.



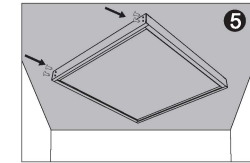
2. Fix the square frames to the ceiling with Screw B.



3. Demount one frame



4. Put the panel into the frame square.



5. Fix the last frame with screw A.

Common Failures & Solutions

Common Failures

Light is out

Flashing

Solutions

- ① Ensure the lamp is well connected.
- ② Ensure the switch is turned on.
- ① Ensure the Voltage is stable.
- ② Ensure the dimmer is compatible.

Notes

1. Indoor lighting only.
2. Before installation, ensure the LED panel is not damaged.
3. Don't stare at the LED luminous surface for long time.
4. Keep away from children, and ensure working electrical apparatus inaccessible to them.
5. No packages accessible to children, because they might be choked for playing, or eating the small accessories.
6. No covering, be away from fire or high-temperature substance.
7. Manufacturer reserves the right to offer no replacement or warranty to the led panels disassembled or repaired by users themselves.
8. Cut off power before cleaning the panels with dry cloth, use no chemical or corrosive substance.
9. Cut off power before installation.