



General Data

Article No.	OTDA4076
Code	DRIVER DALI/DMX 4CH 150W/24V IP20 RADIUM
Product EAN	4003556011038
Customs tariff no.	85044082
Box quantity (pcs.)	20
EAN Box	4003556411036
Gross weight of box in kg	9.6
Length of box in m	0.362
Width of box in m	0.34
Height of box in m	0.093
ETIM class	EC002710
ETIM class name	LED driver
Weight	400 g

Electric Parameters

Rated value output power max.	150 W
Power factor	≥0,98
Output Voltage	24 V
Surge voltage resistance (L - N)	2 kV
Number of Channels	4
Supply frequency	50/60 Hz
Dimmable	Yes
Dimming interface	DALI (DT6), DMX, PushDIM

Service Life

Service life	50000 h
--------------	---------

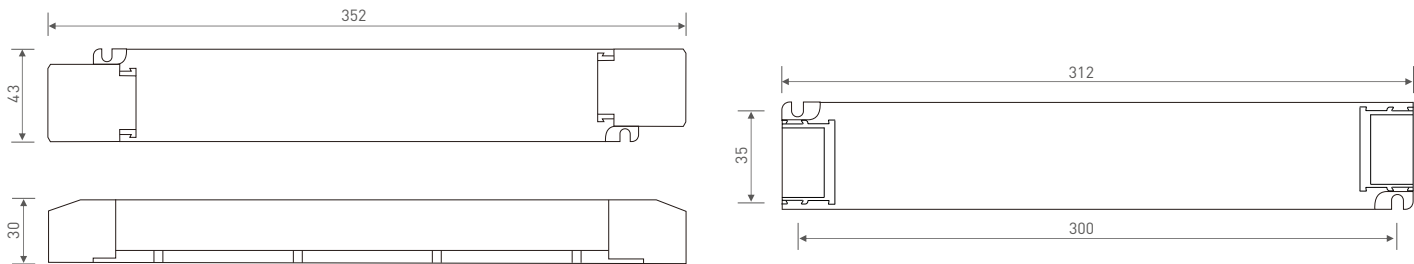
Specification

Mean efficiency	93 %
Length	352 mm
Height	30 mm
Width	43 mm
Model	Static
Material	Plastic
Colour	white
Weight	400 g

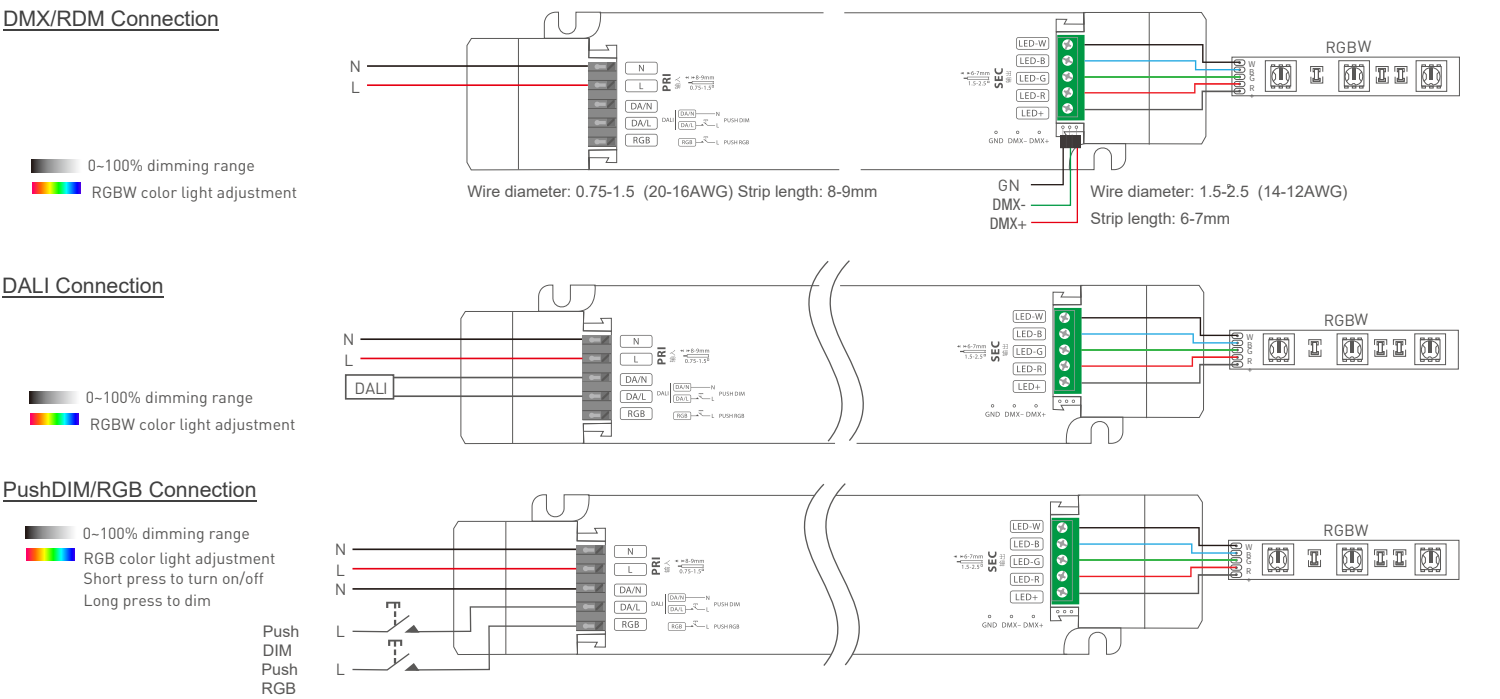
Notes on Operation

Degree of protection (IP)	IP20
Type of connection	screw clamp
Ambient temperatures	-25...+50 °C
Tc Temperature max.	85 °C

Dimensions



Wiring Diagram



Touch & DIM

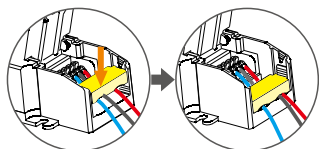


Reset switch

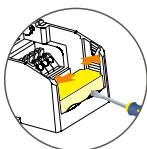
- On/off control: Short press.
- Stepless dimming: Long press.
- With every other long press, the brightness level goes to the opposite direction.
- Dimming memory: Go to the brightness level adjusted previously when lights are turned on.

Protective Housing Application Diagram

Tension plate

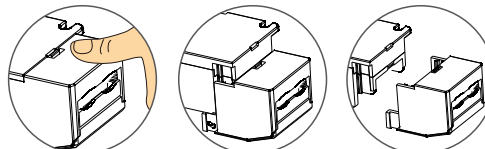


Push the tension plate down to fix the electric wires.



Push the side plate outwards and remove the tension plate by prying it up with a tool at the same time.

Remove the protective housing



Pull the bottom left and right from the bottom to remove it.

Notes

Please, refer to www.radium.de/recycling for notes on disposal of burned-out lamps as well as lamp breakage.

The "lifespan L70" described for LED lamps indicates the number of hours when the luminous flux has decreased to 70% of its initial value. The optimal field 'info about service life' contains the frame conditions according to standards based on which the specific service life has been determined. So, for example, "12B50, 50Hz" means that the mean service life (B50) has been determined with a 12h switching cycle at mains (frequency 50Hz), "3B50, HF" is based on a 3h switching cycle at electronic control gear (high frequency).

Special features



General notes

The technical design data in accordance with DIN and IEC. The producer does not take any responsibility for damage to persons or property in case of unsuitable operation or handling of the product. Operating data and dimensions are valid within the usual tolerances. Related lamp types (different bases, mains voltages) may be available on request. Sale and delivery are effected in accordance with the Radium Terms of Delivery and Payment valid on the day of conclusion of contract. Packing units offer economical advantages to the purchase and logistic department. Please match your quantity volume accordingly. For orders of a minimum quantity (clefts) with a lamp model the amount lower than the volume of each packaging unit, we will invoice 10 % additional charge per lamp type. Technical changes and terms of delivery are reserved. Manipulation of any kind to packaging or product is not permissible as this will violate Radium brand rights. Furthermore, technical properties of the product can change to its disadvantage or even destruction. Therefore, Radium cannot be responsible for consequential damages.

® = Registered trademark

Subject to change without notice. Errors and omissions excepted.

All technical data without guarantee.