

# Remote for RF Dimmer

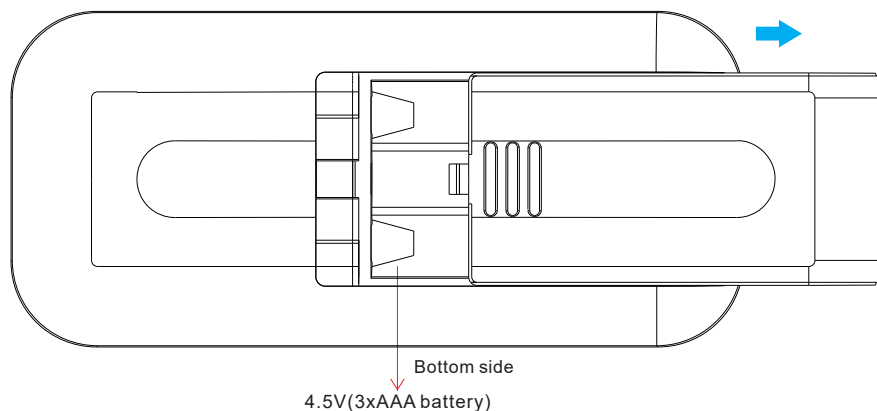
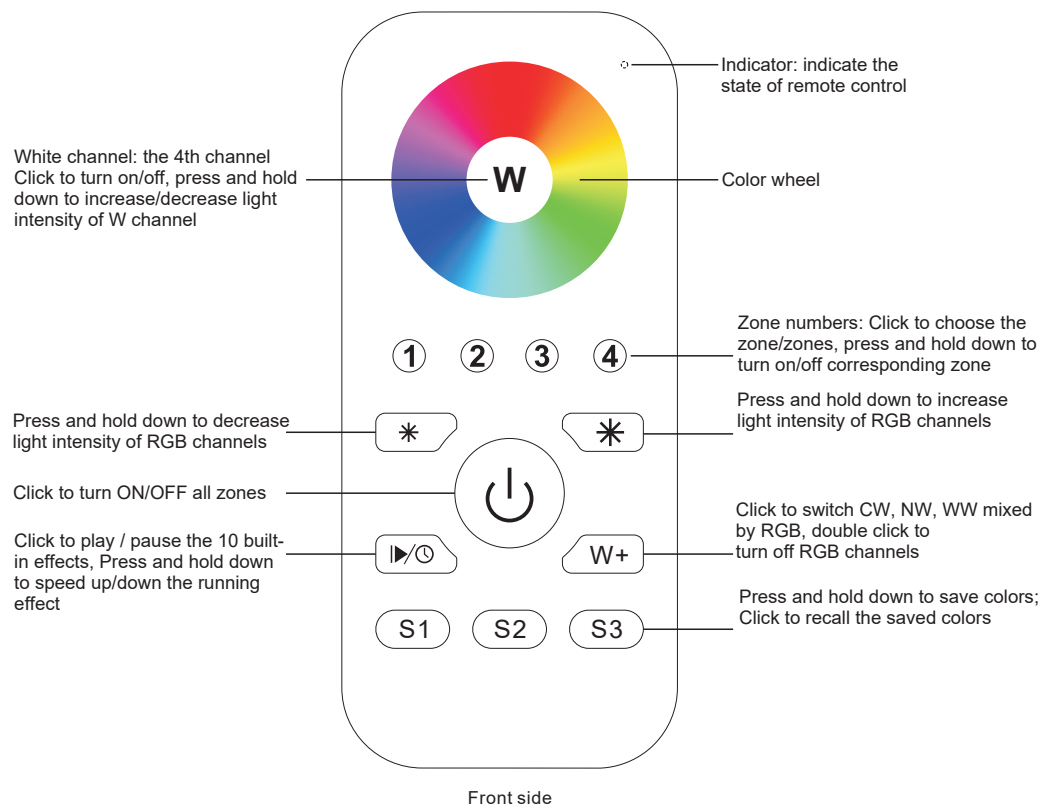
## REMOTE RF RGB 4Z

# Radium

Date: 09.06.2021

**Important:** Read All Instructions Prior to Installation

### Function introduction



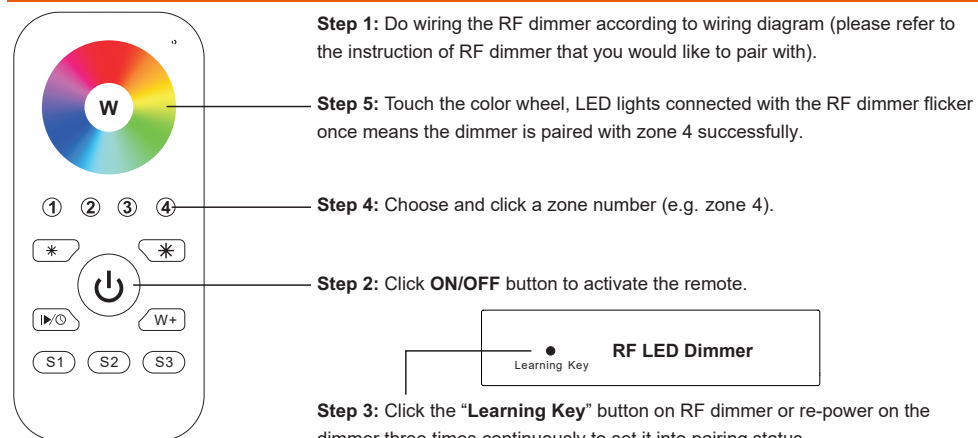
### Product Data

Output	RF signal	<ul style="list-style-type: none"><li>• Control 4 zones of RF dimmers separately.</li><li>• RGBW color remote</li><li>• High sensitive &amp; high stable, fast &amp; precise color control.</li><li>• Compatible with all Radium dimmers</li><li>• 1 dimmer can be paired by max. 8 different remotes.</li><li>• Waterproof grade: IP20</li></ul>
Operation Frequency	869.5/916.5/434MHz	
Power Supply	4.5V(3xAAA battery)	
Operating temperature	0-40°C	
Relative humidity	8% to 80%	
Dimensions	120x55x17mm	

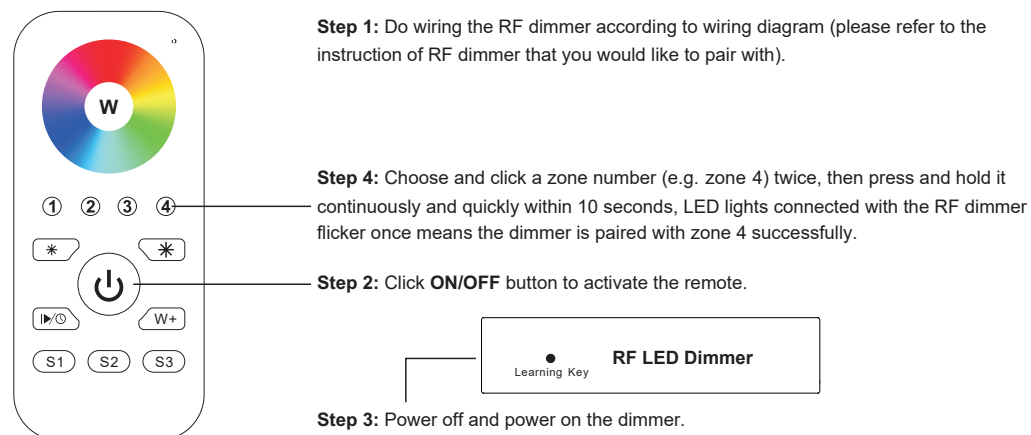
### Safety & Warnings

- This device contains AAA batteries that shall be stored and disposed properly.
- DO NOT expose the device to moisture.

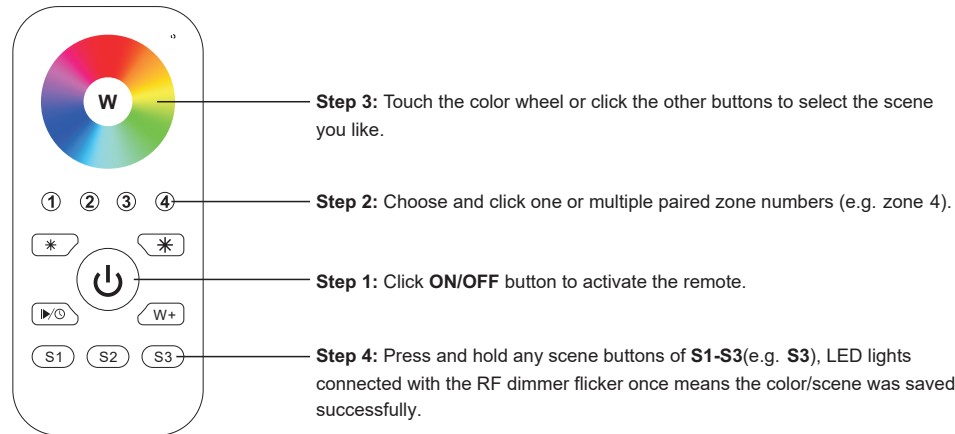
### Pair with RF dimmer (Method 1)



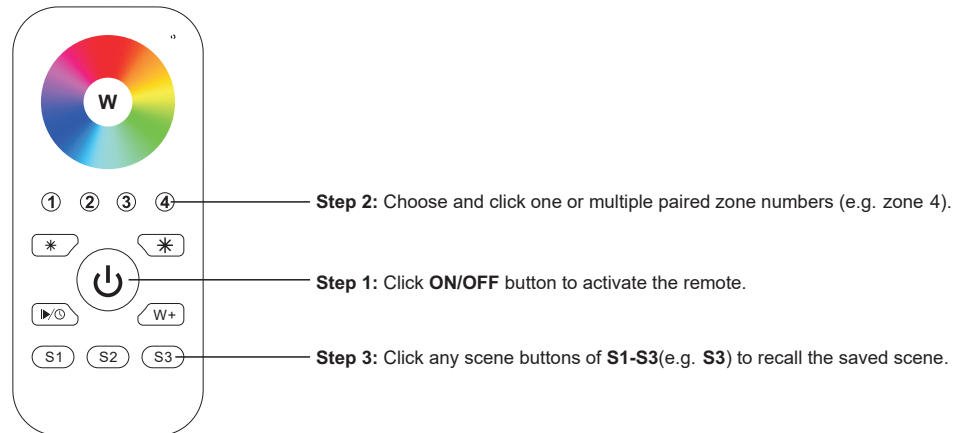
### Pair with RF dimmer (Method 2)



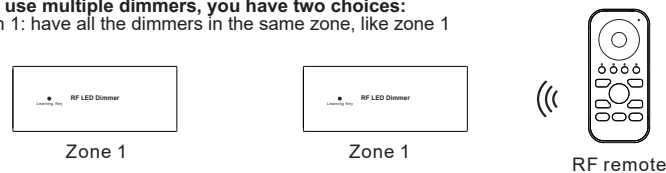
## Save color/scene/mode



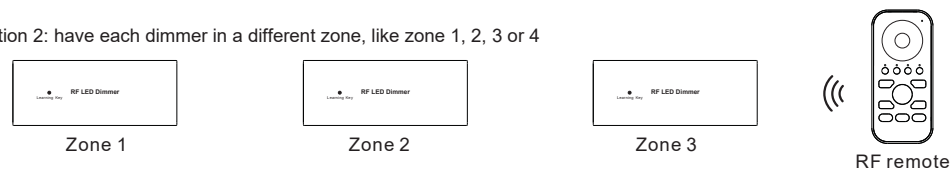
## Recall the saved colors/scenes



If you use multiple dimmers, you have two choices:  
Option 1: have all the dimmers in the same zone, like zone 1



Option 2: have each dimmer in a different zone, like zone 1, 2, 3 or 4



## Built-in 10 color changing modes are as follows:

Mode 1: Any two colors of RGB mix fade-in & fade-out

Mode 2: RGB three colors mix fade-in & fade-out

Mode 3: RGB three colors mix fade-out & fade-in

Mode 4: RGB flash

Mode 5: RGB three colors fade-in & fade-out successively

Mode 6: RGB three colors fade-in successively

Mode 7: RGB three colors fade-out successively

Mode 8: RGB three colors jump changing successively

Mode 9: R&B two colors mix fade (R in B out), then G fade-in, then R&B mix fade (R out B in), then G fade-out

Mode 10: B fade-out, then G&B mix fade (G out B in), then R&G mix fade (R out G in), then R fade-in

